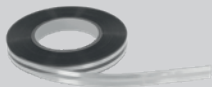
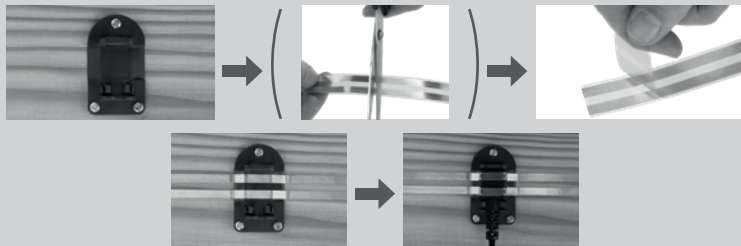


Lieferumfang / Pièces fournies / Included in delivery / Dotazione / Zakres dostawy:



Montage / Montage / Mounting / Montaggio / Montaž:



(DE) Bitte beachten Sie die Bedienungsanleitung von SnailStop Elektrischer Schneckenzaun Starter-Set (Art. 291130) bzw. SnailStop Stromgerät (Art. 291125).

(FR) Veuillez tenir compte du mode d'emploi du kit débutant de la clôture électrique anti-limaces SnailStop (Réf. 291130) et/ou de l'électrificateur SnailStop (Réf. 291125).

(EN) Please refer to the operating instructions for SnailStop Electric Slug Fence Starter Kit (item 291130) or SnailStop Power Supply (item 291125).

(IT) Seguire le istruzioni della recinzione elettrica contro le lumache SnailStop Starter Set (art. 291130) e dell'apparecchio elettrico SnailStop (art. 291125).

(PL) Należy zapoznać się z instrukcją obsługi zestawu startowego elektrycznego ogrodzenia przeciw ślimakom SnailStop (art. 291130) lub zasilacza SnailStop (art. 291125).